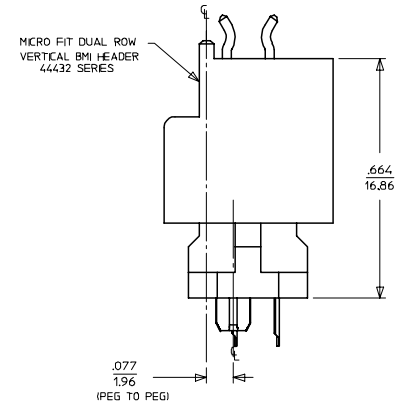
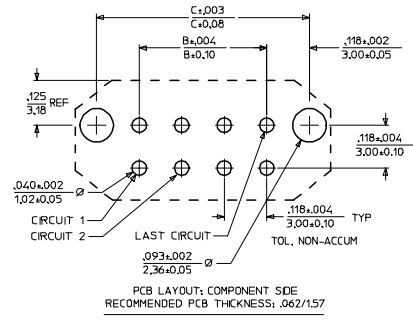
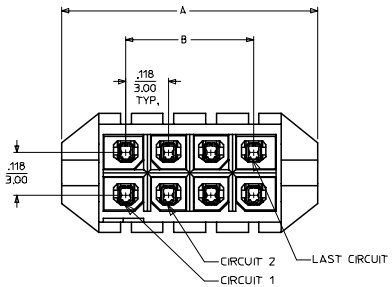
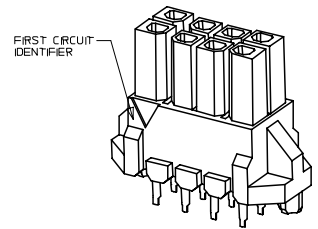
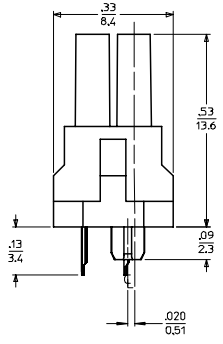
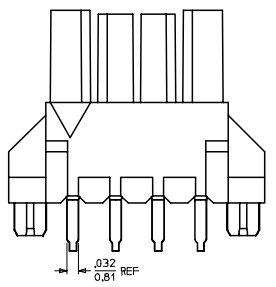


CIRCUIT SIZE	DIM. "A"	DIM. "B"	DIM. "C"	MATERIAL NUMBER	NUMBER OF POSITIONS	PLATING OPTION
4	.472/(12.00)	.118/(3.00)	.354/(9.00)	44769-0401	04	A
6	.591/(15.00)	.236/(6.00)	.472/(12.00)	44769-0402	04	B
8	.709/(18.00)	.354/(9.00)	.591/(15.00)	44769-0403	04	C
10	.827/(21.00)	.472/(12.00)	.709/(18.00)	44769-0601	06	A
12	.945/(24.00)	.591/(15.00)	.827/(21.00)	44769-0602	06	B
14	1.063/(27.00)	.709/(18.00)	.945/(24.00)	44769-0603	06	C
16	1.181/(30.00)	.827/(21.00)	1.063/(27.00)	44769-0801	08	A
18	1.299/(33.00)	.945/(24.00)	1.181/(30.00)	44769-0802	08	B
20	1.417/(36.00)	1.063/(27.00)	1.299/(33.00)	44769-0803	08	C
22	1.535/(39.00)	1.181/(30.00)	1.417/(36.00)	44769-1001	10	A
24	1.654/(42.00)	1.299/(33.00)	1.535/(39.00)	44769-1002	10	B
				44769-1003	10	C
				44769-1201	12	A
				44769-1202	12	B
				44769-1203	12	C
				44769-1401	14	A
				44769-1402	14	B
				44769-1403	14	C
				44769-1601	16	A
				44769-1602	16	B
				44769-1603	16	C
				44769-1801	18	A
				44769-1802	18	B
				44769-1803	18	C
				44769-2001	20	A
				44769-2002	20	B
				44769-2003	20	C
				44769-2201	22	A
				44769-2202	22	B
				44769-2203	22	C
				44769-2401	24	A
				44769-2402	24	B
				44769-2403	24	C



MATED DIMENSIONS  
(FOR ALIGNMENT OF PCB'S IN X & Y DIRECTIONS)



NOTES:  
 1. MATERIAL:  
 HOUSING: HIGH TEMP. NYLON, GLASS FILLED, UL 94V-0, COLOR - BLACK  
 TERMINALS: PHOSPHOR BRONZE ALLOY  
 2. FINISH:  
 (A) - .000100/0.00254 MIN. TIN OVER  
 .000050/0.00127 MIN. NICKEL  
 (B) - .000015/0.00039 MIN. SELECTIVE GOLD IN CONTACT AREA,  
 .000100/0.00254 MIN. SELECTIVE TIN IN PC TAIL AREA,  
 BOTH OVER .000050/0.00127 MIN. NICKEL  
 (C) - .000030/0.00076 MIN. SELECTIVE GOLD IN CONTACT AREA,  
 .000100/0.00254 MIN. SELECTIVE TIN IN PC TAIL AREA,  
 BOTH OVER .000050/0.00127 MIN. NICKEL  
 \* THE PRIMARY SHIPPING CARTON WILL BE LABELED "COMPLIANT TO"  
 RoHS DIRECTIVE 2002/95/EC AND ELV ANNEX I OF DIRECTIVE 2000/53/EC."  
 CARTONS WITHOUT THIS LABEL MAY CONTAIN PRODUCT WITH TIN/LEAD  
 IN THE PC TAIL AREA.  
 3. PRODUCT SPECIFICATIONS: PS-44300-001  
 4. PACKAGING SPECIFICATION: PK-44769-001.  
 5. MATES WITH MOLEX MICRO-FIT BMI HEADER SERIES 44432, 44428, AND 44300.  
 6. MOLEX RECOMMENDS THE USE OF MICRO-FIT TEST PLUG (SERIES 44242) WHENEVER  
 CONTINUITY TESTING IS PERFORMED. TEST PLUGS MUST NOT BE USED TO MAKE OR  
 BREAK UNDER LOAD. MOLEX DOES NOT RECOMMEND USING STANDARD MATING  
 COMPONENTS (SERIES 44432, 44428, OR 44300) FOR TESTING PURPOSES.

ADD MATING DIMENSIONS EC NO: UCP2005-2881 DRWN: JLOWE 2005/07/07 CHKD: SSOUSEK 2005/07/13 APPR: ESMITH 2005/07/15	QUALITY SYMBOLS -0 -0	GENERAL TOLERANCES (UNLESS SPECIFIED)		SCALE ---	DESIGN UNITS INCH	THIRD ANGLE PROJECTION REVISE ON CAD ONLY MICRO-FIT (3.0) BMI VERT. RECEPTACLE ASS'Y 4 - 24 CIRCUIT MOLEX MOLEX INCORPORATED MATERIAL NO. DOCUMENT NO. SHEET NO. SEE CHART SD-44769-001 1 OF 1
		mm	INCH	DIMENSION STYLE IN/MM		
		4 PLACES ± --- ± ---	3 PLACES ± --- ± .010	DRAWN BY BURLESON	DATE 2000/07/13	
		2 PLACES ± 0.25 ± .014	1 PLACE ± 0.35 ± ---	CHECKED BY MUELLER	DATE 2000/07/13	
DRAFT WHERE APPLICABLE		APPROVED BY EDGLEY		DATE 2000/07/13		THIS DRAWING CONTAINS INFORMATION THAT IS PROPRIETARY TO MOLEX INCORPORATED AND SHOULD NOT BE USED WITHOUT WRITTEN PERMISSION
MUST REMAIN WITHIN DIMENSIONS						